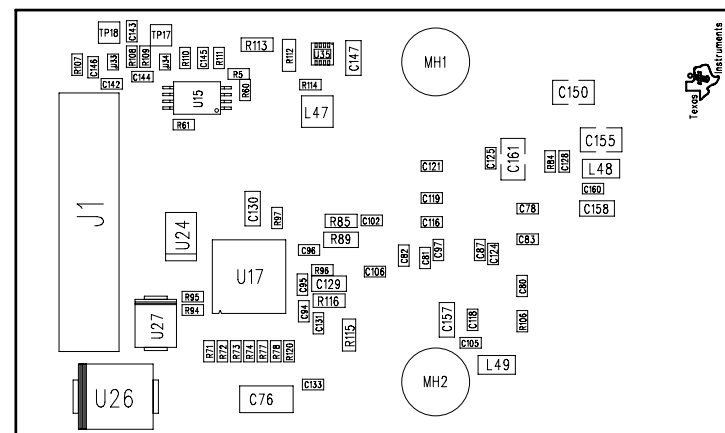


Notes:

- 1) Refer to BOM for stuffing options.
- 2) Observe polarity on diodes and capacitors.

REVISIONS				
REV.	REV.	DESCRIPTION	DATE	APPROVED



PRIMARY SIDE

TIDM-MINI-DC

APPLICATION		CONTRACT NO.	DWN: www.WSTScorp.com	9/14	TEXAS INSTRUMENTS TITLE: ASSEMBLY DRAWING, F28PLC90PZT_AFE032				
USED ON	NEXT ASSY.		CHK:						
		P.E.:							
		DES.ENG.:							
		P.C.:							
		UNLESS OTHERWISE SPECIFIED	Q.C.:		F28PLC90PZT_AFE032				
		1. TOLERANCES:	C.M.:						
		LINEAR = : 0.26 (.010)	REL:						
		ANGULAR = : 0.50 °	MFG:						
		2. ALL DIMENSIONS ARE IN MM (INCHES).	ENG.MGR:						
MATERIAL: SEE NOTE FINISH: SEE NOTE		3. INTERPRET DRAWING IN ACCORDANCE WITH DOD-STD-100.	OTHER:		C		F28PLC90PZT_AFE032	3	
			OTHER:		SCALE: 1:1		SHEET 1 OF 2		
			OTHER:						
DO NOT SCALE DRAWING									